

How to install the NEO SlimLoader IV/SMS4 driver in Windows 8/10 @ 32bit/64bit ?

The new win8 and win10 has make some trouble to end user when they try to install the SL4/SMS4 driver,so here we give out the step by step installation guide.

Now, we try to install SL4 in win10 x64, follow me.

PC

PC name DESKTOP-UQ55CQ2

Rename PC

Organization WORKGROUP

Join a domain

Join Azure AD

Edition Windows 10 Enterprise

Product ID 00329-00000-00003-AA066

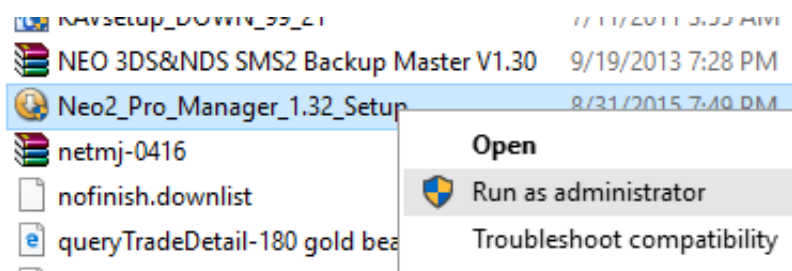
Processor Intel(R) Atom(TM) CPU 330 @ 1.60GHz 1.60 GHz

Installed RAM 4.00 GB (3.25 GB usable)

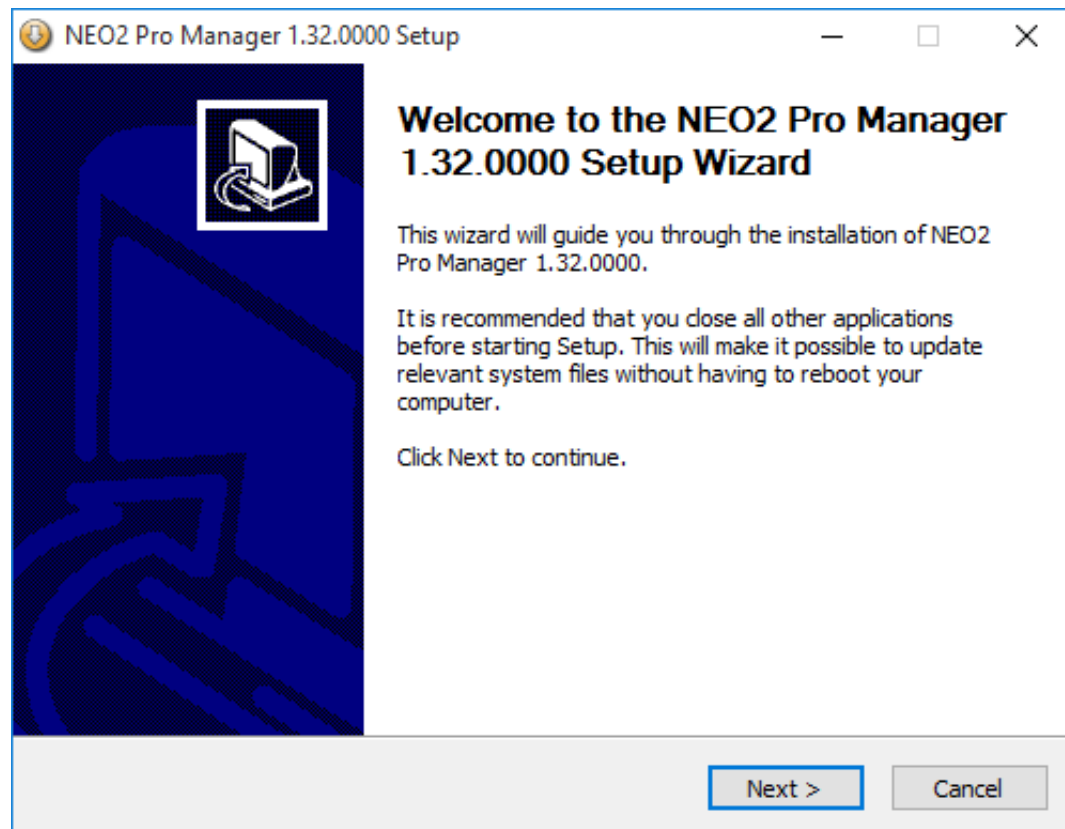
System type 64-bit operating system, x64-based processor

Pen and touch No pen or touch input is available for this display

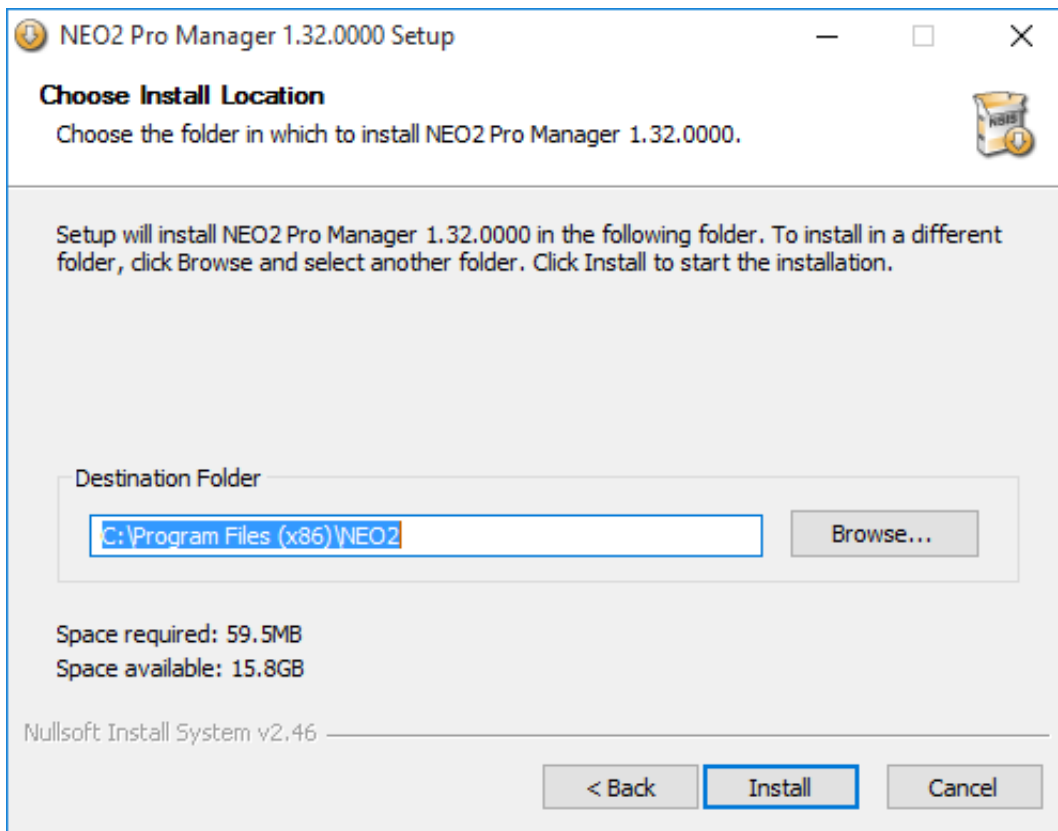
[1] Right click the Neo Manager EXE file, and choose "Run as administrator" to run.



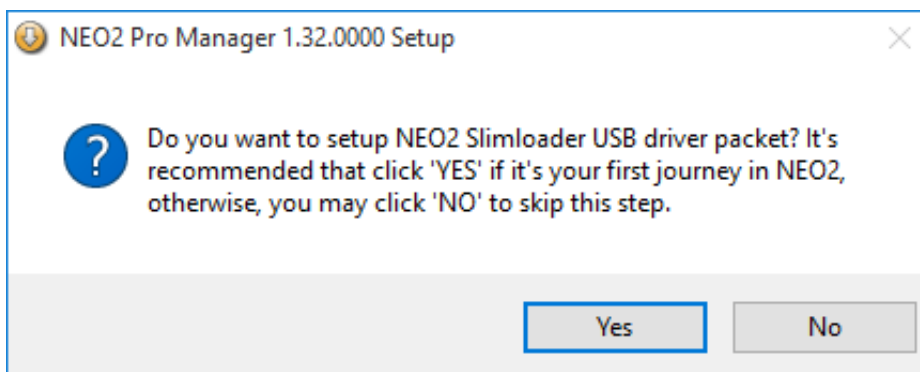
[2] Click "Next"



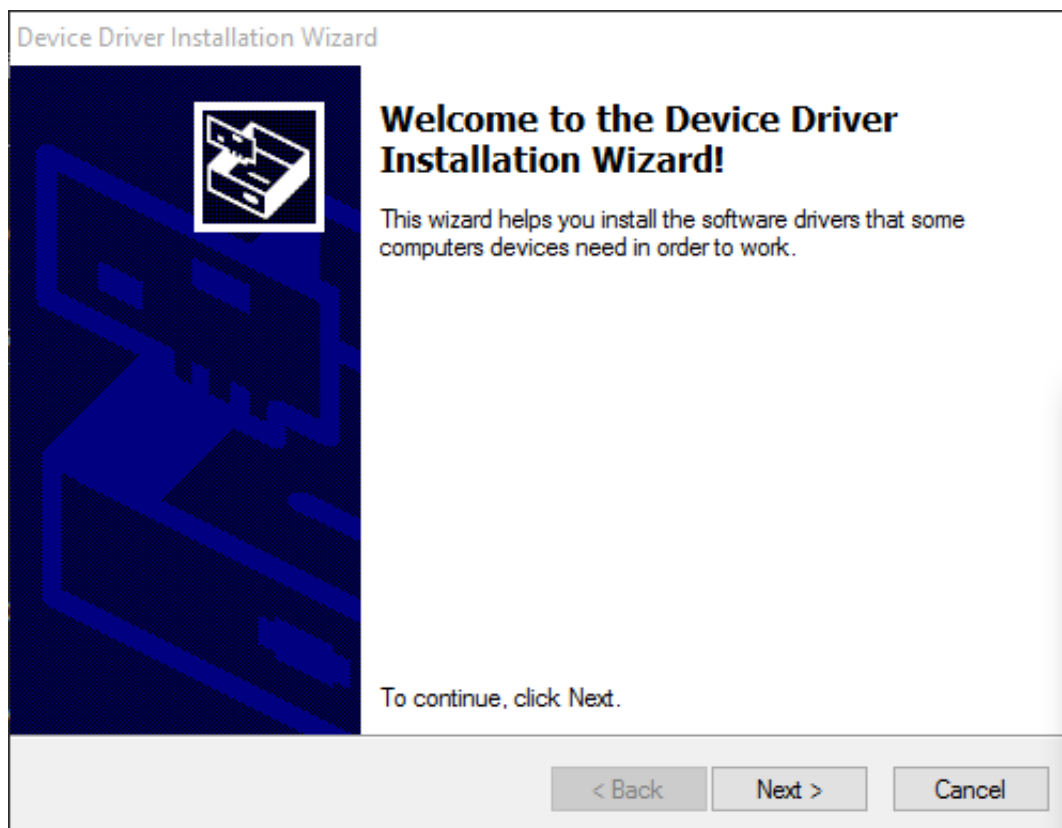
[3] Click "Install"



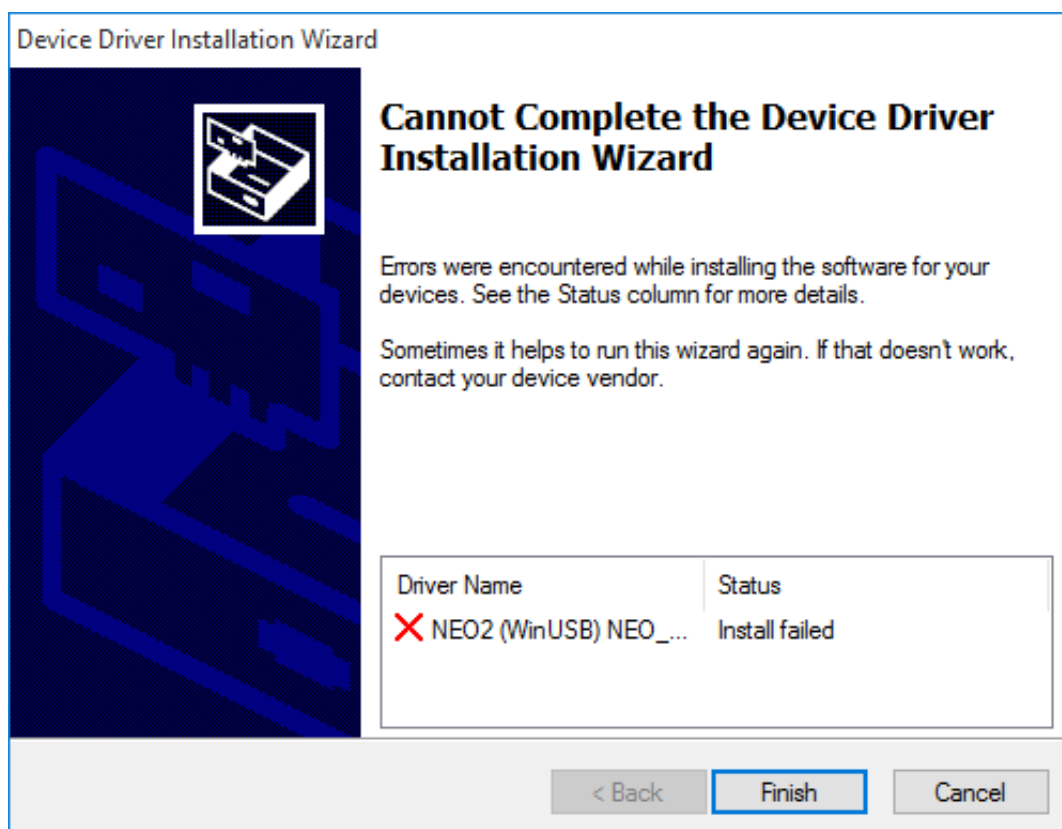
[4] Click "Yes"



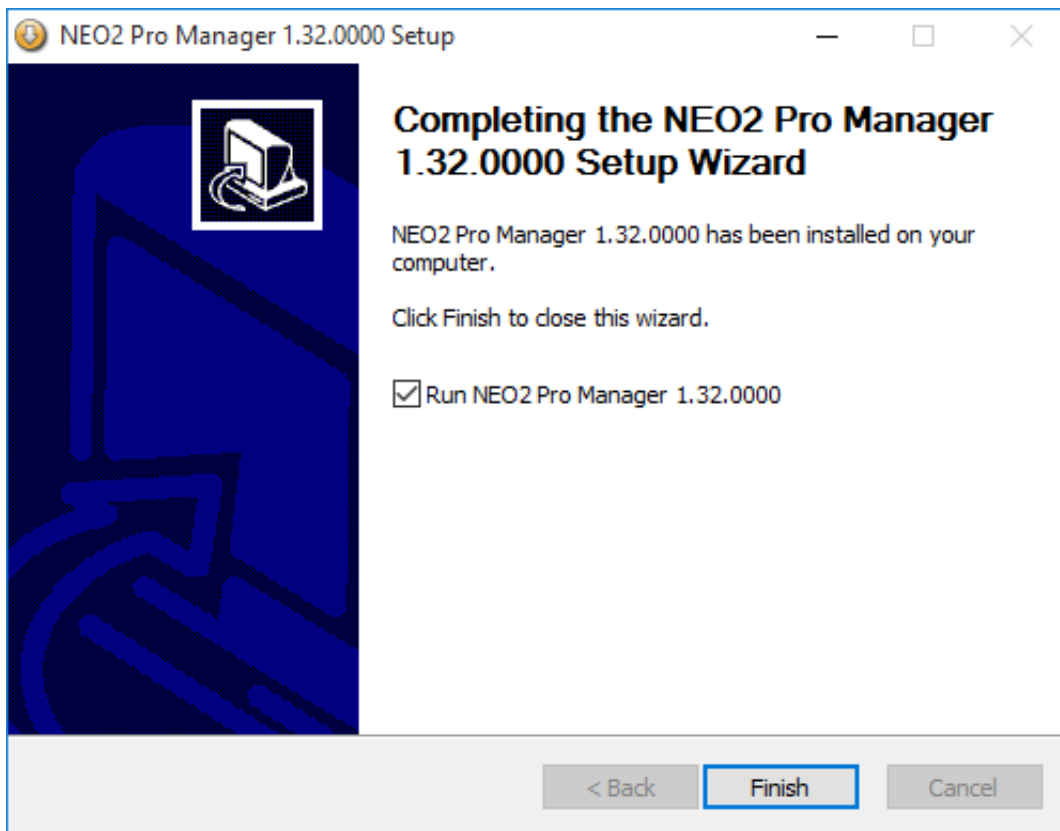
[5] And "Next"



[6] Ohoh.....you can see trouble appear, SL4 driver install failed!

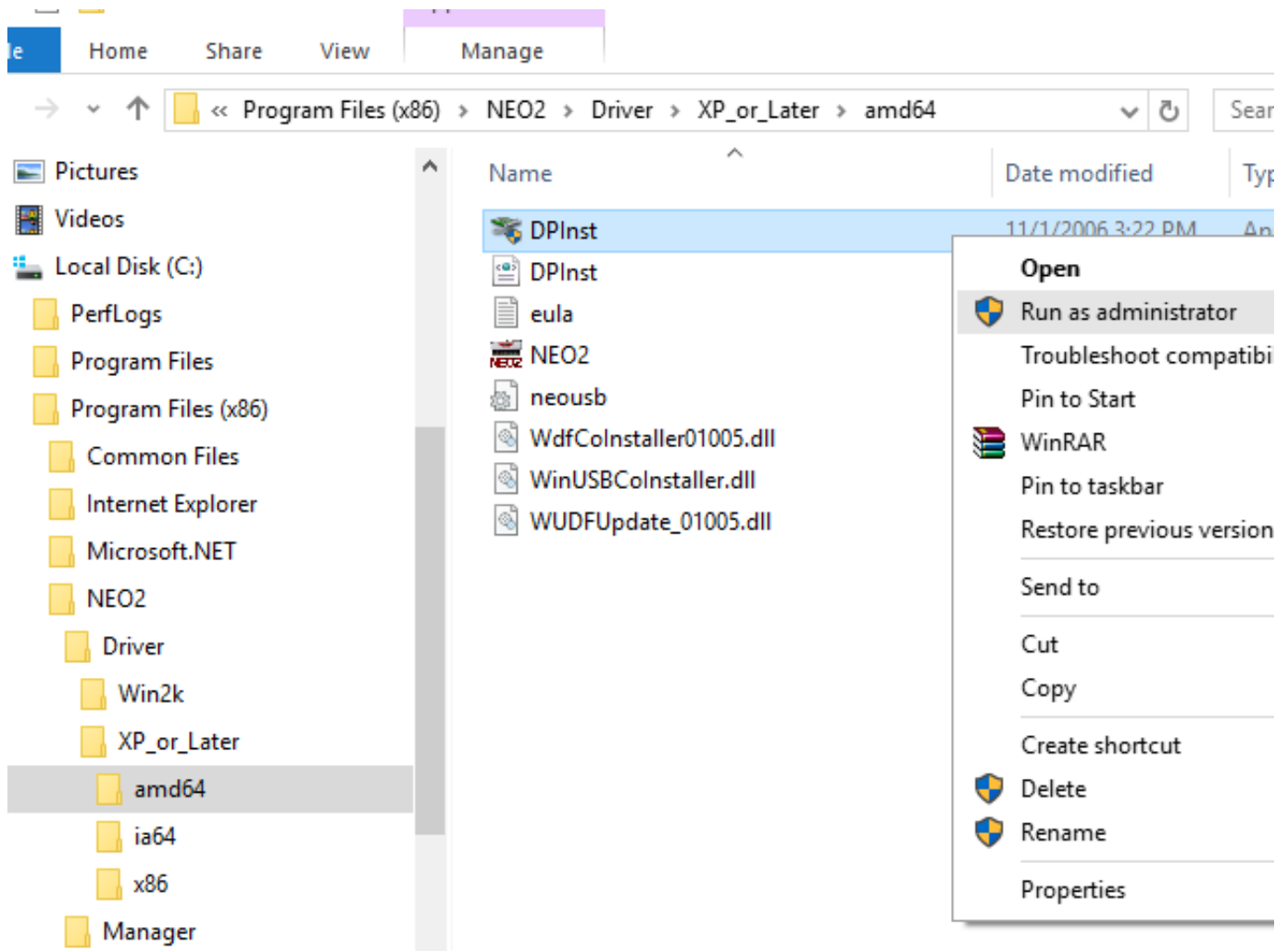


[7] Anyway, finish it firstly.

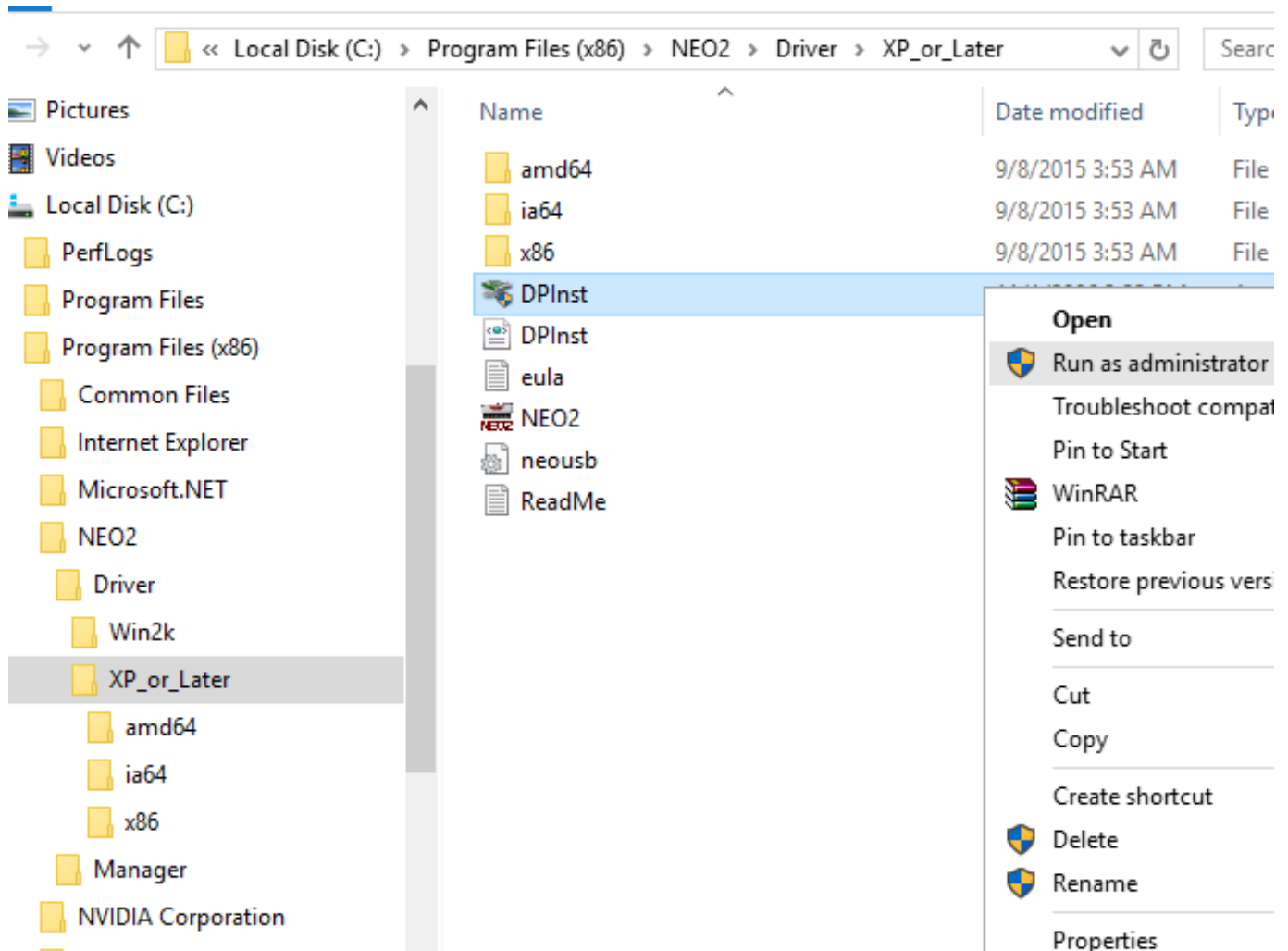


[8] Now goto "C:\Program Files (x86)\NEO2\Driver\XP_or_Later\amd64" , right click "DPInst.exe" and choose "Run as administrator" to run ,try to install SL4 driver again.

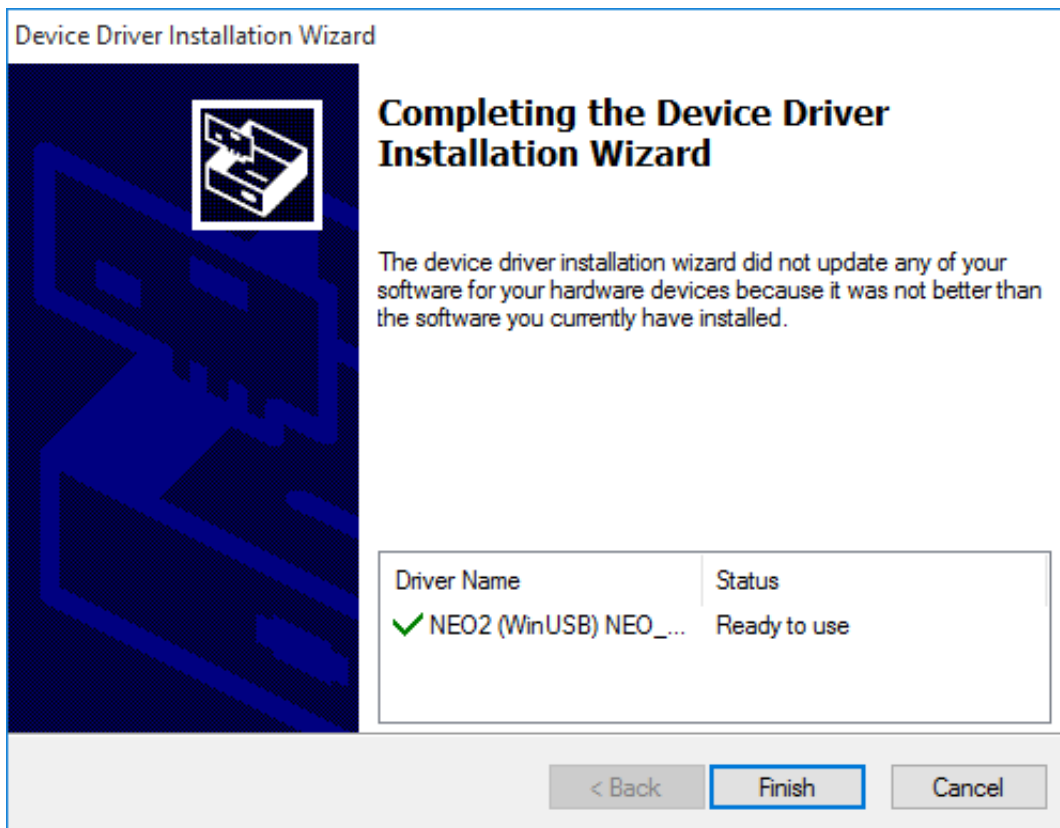
For some other special CPUs, maybe you need choose "C:\Program Files (x86)\NEO2\Driver\XP_or_Later\ia64\DPInst.exe" this file to run.



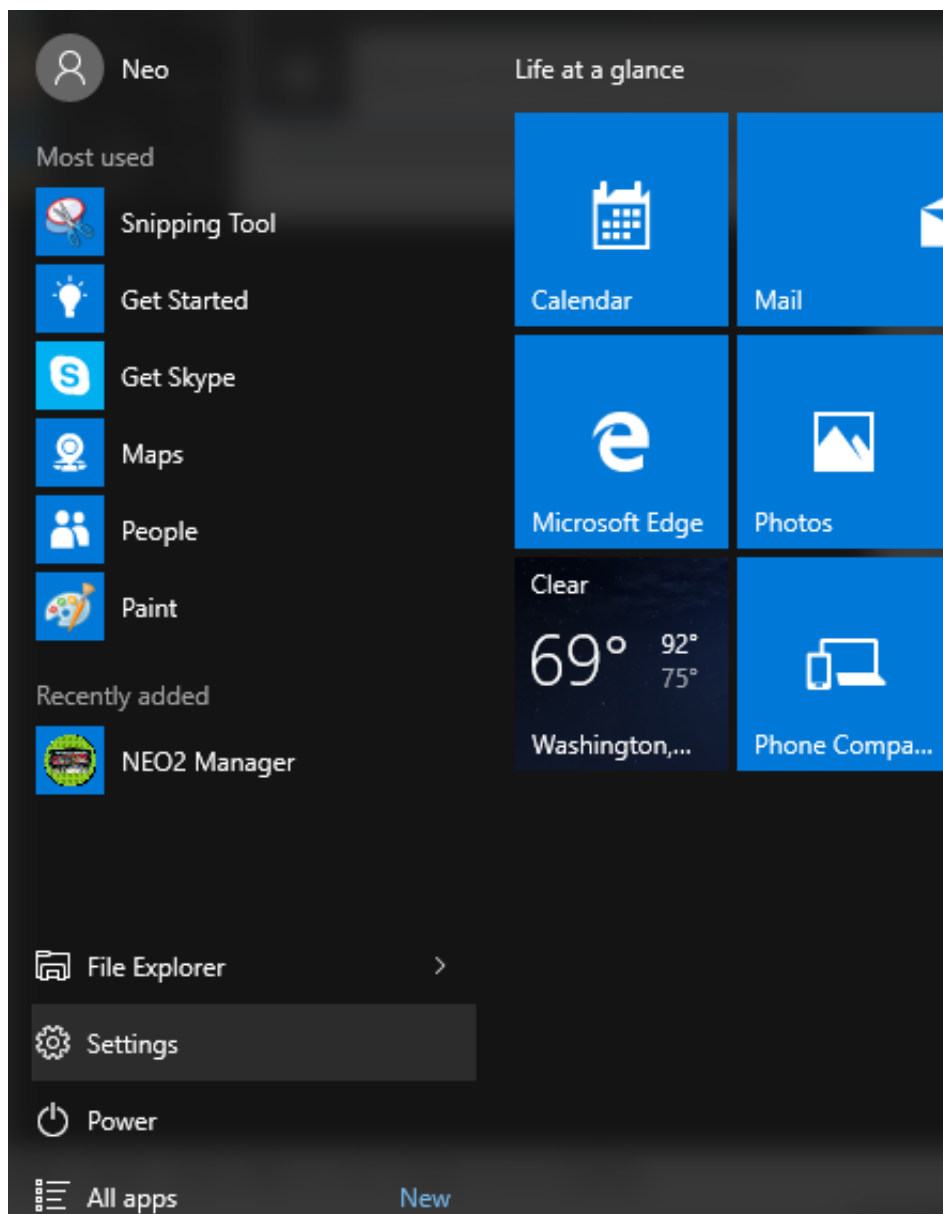
If your system is 32 bit, then you need select "[C:\Program Files \(x86\)\NEO2\Driver\XP_or_Later\DPlnst.exe](#)" this file.



[9] When we try to install it in the WIN10 32bit, it going well and install complete directly. So if you are lucky, SL4 driver will install successful in your system, now you can ignore the below content already:D



[10] OK, now start to install it through a little complex way. Click STAR icon and select "Settings"



[11] Click "Devices"



System

Display, notifications,
apps, power



Devices

Bluetooth, printers,
mouse



Network & Internet

Wi-Fi, airplane mode,
VPN



Time & language

Speech, region, date



Ease of Access

Narrator, magnifier,
high contrast



Privacy

Location, camera

[12] And click "Device manager"

Download over metered connections

To help prevent extra charges, keep this off so device software (drivers, info, and apps) for new devices won't download while you're on metered Internet connections.

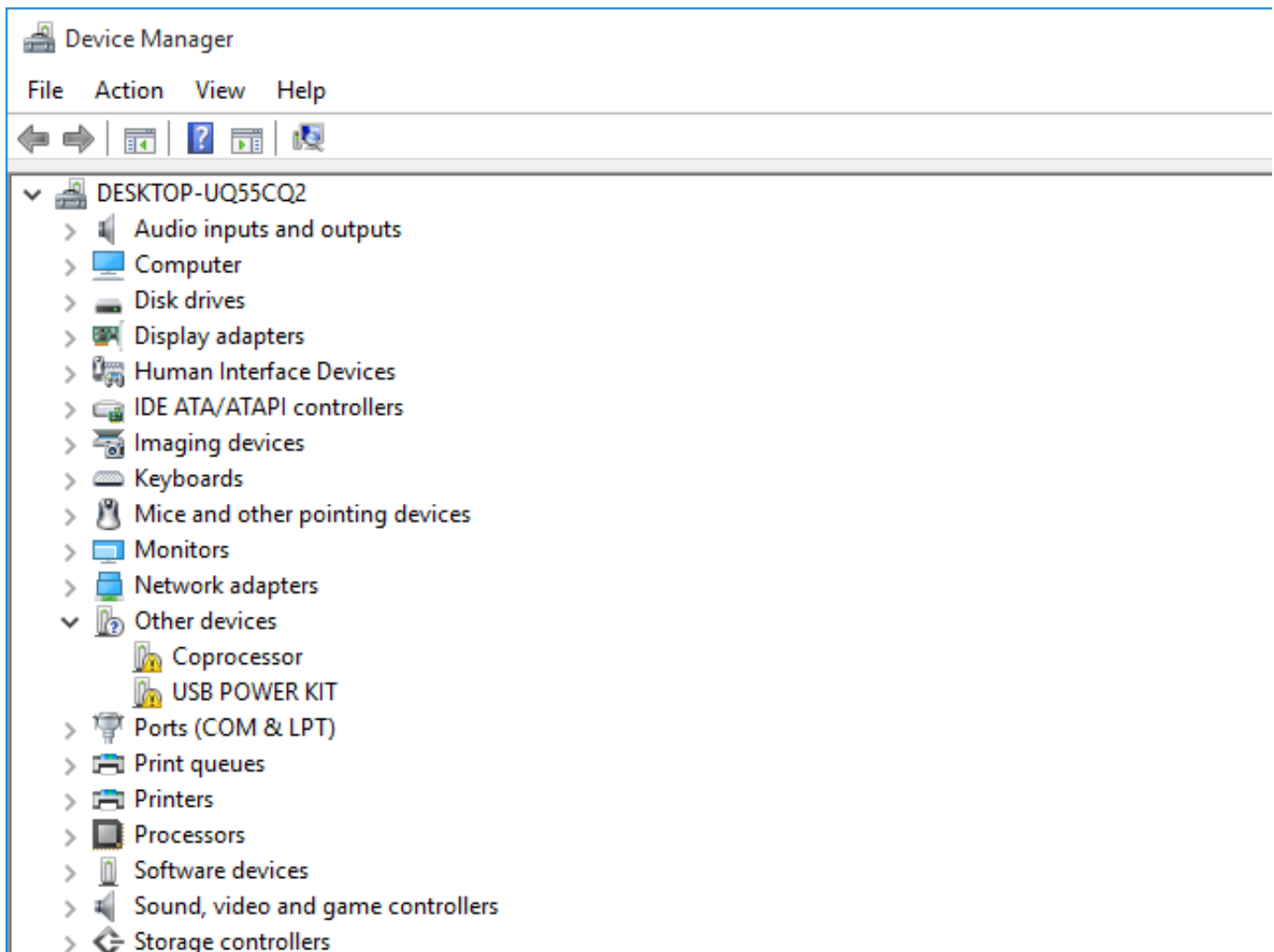
☐ Off

Related settings

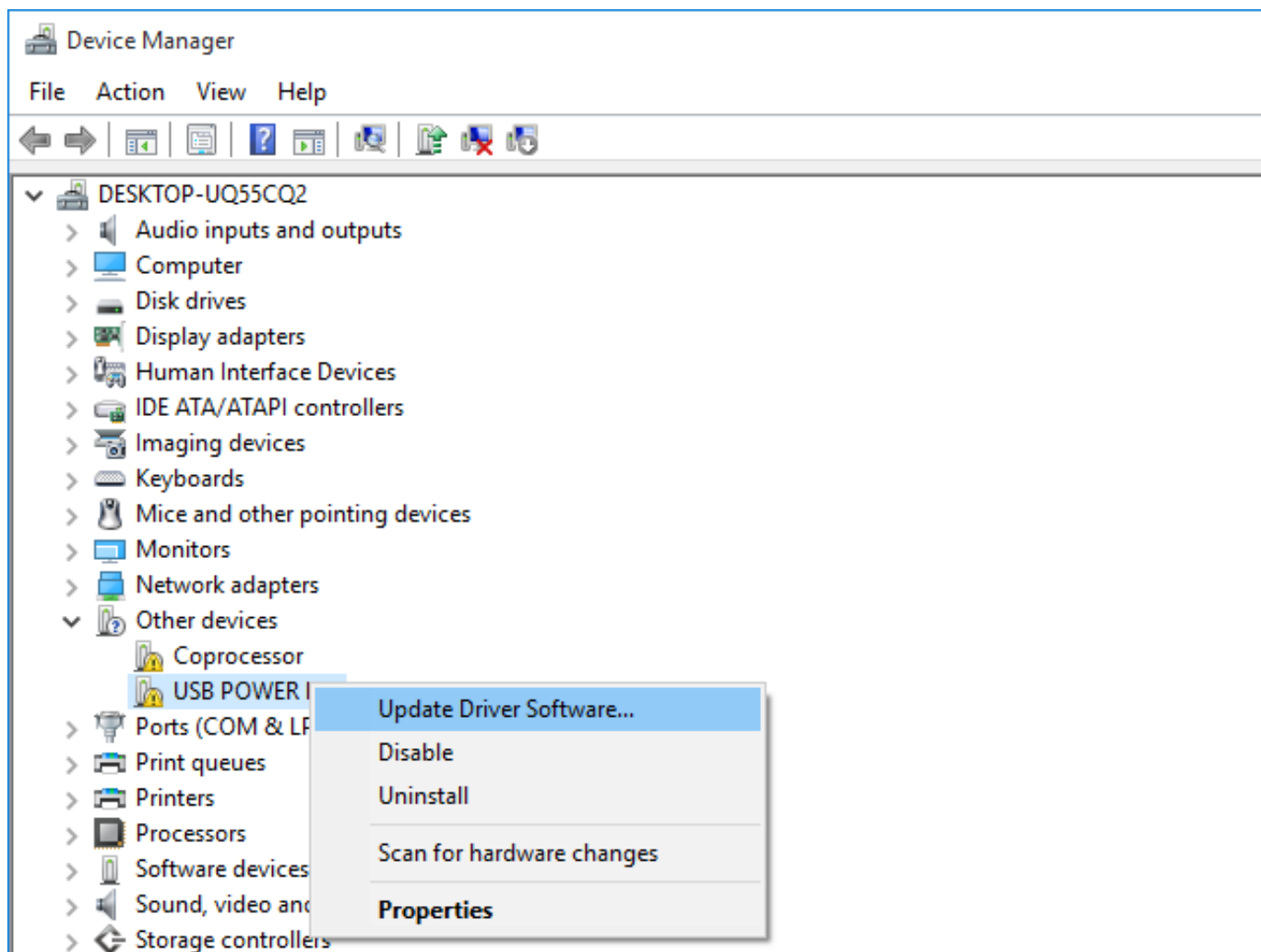
[Devices and printers](#)

[Device manager](#)

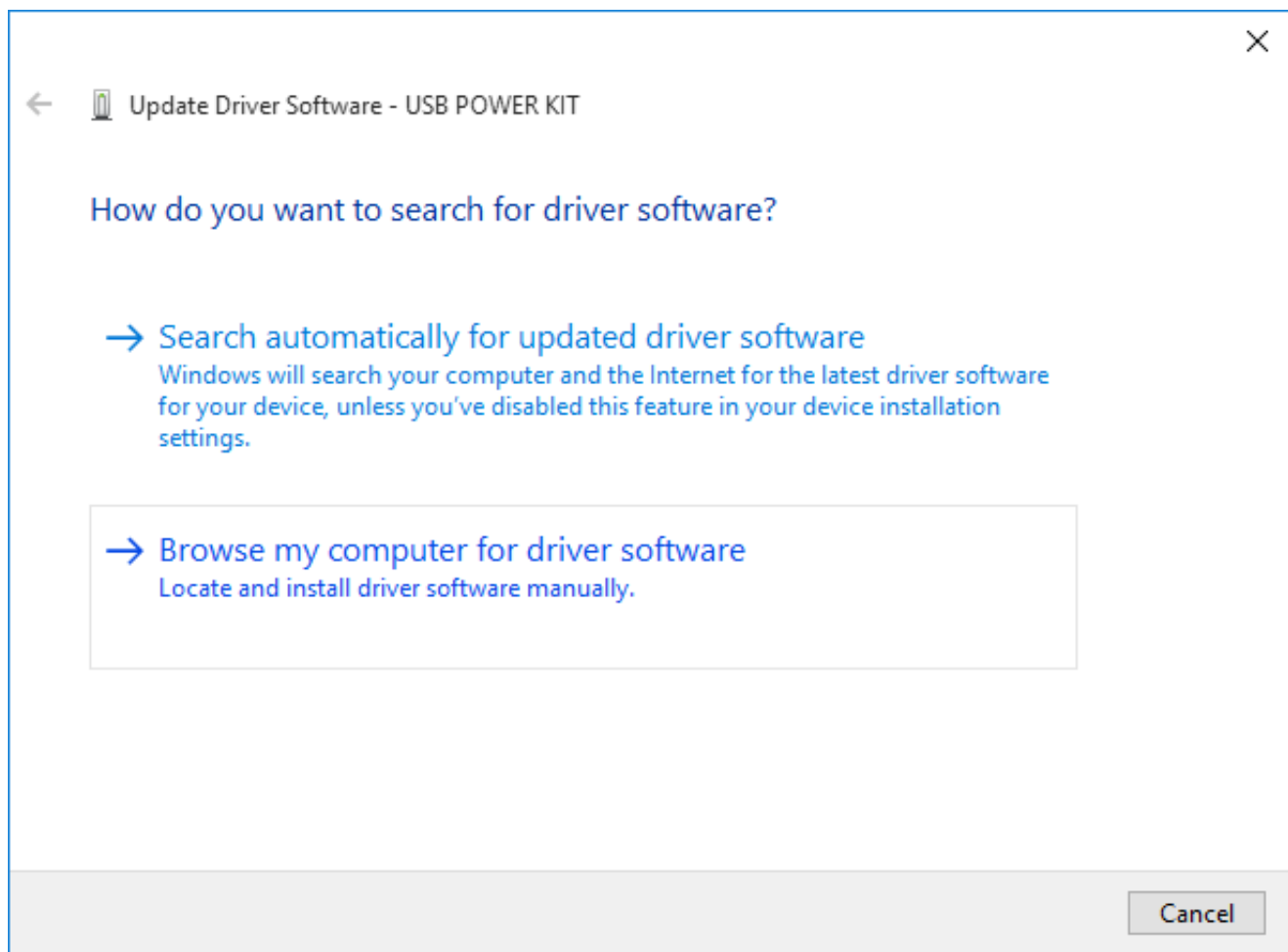
[13] Now you can see the SL4 device show as "USB POWER KIT" and the status is driver not install complete yet.



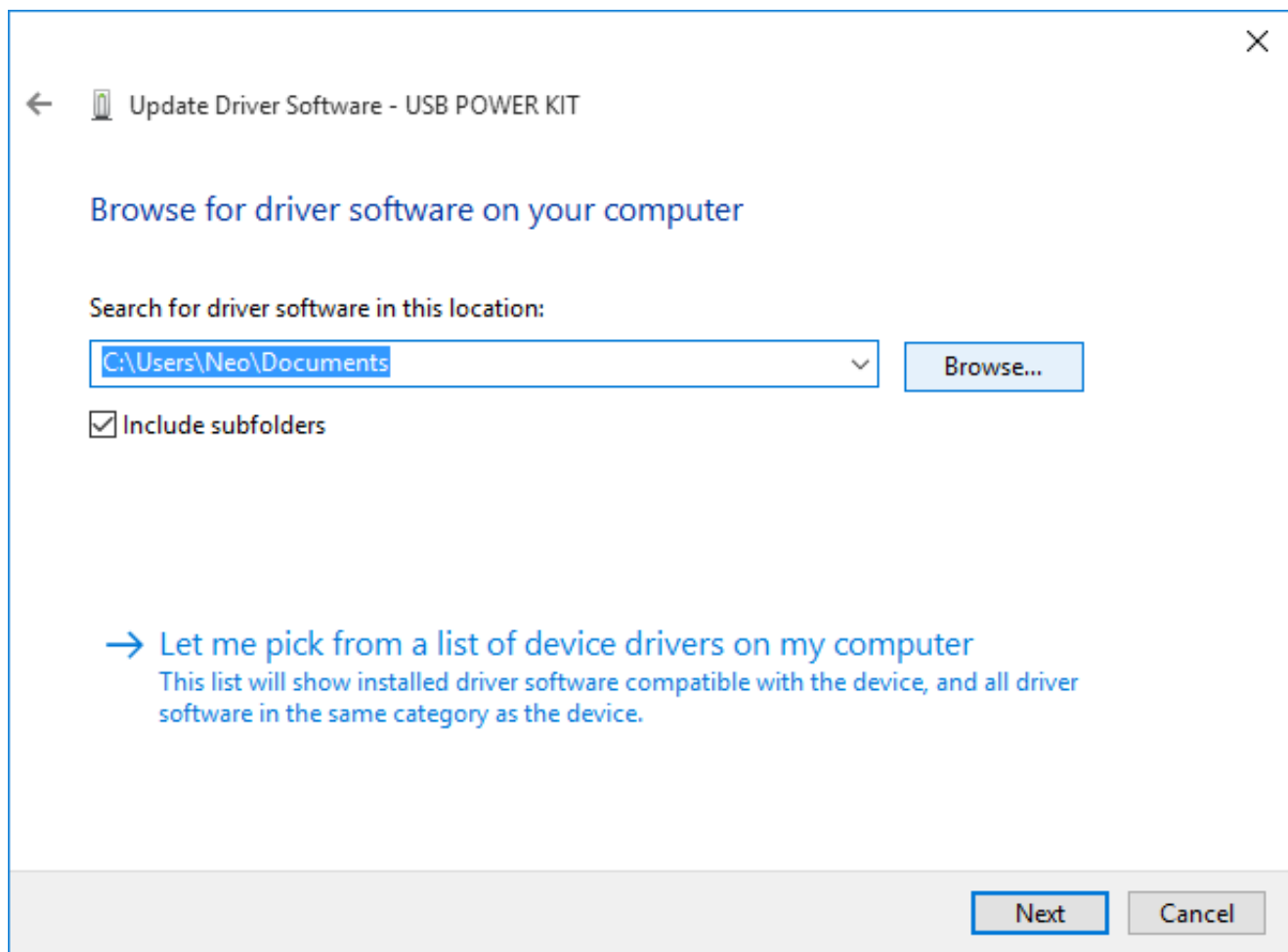
[14] Here we try to install this driver by manually. Right click and select "Update Driver Software"



[15] Select "Browse my computer for driver software"

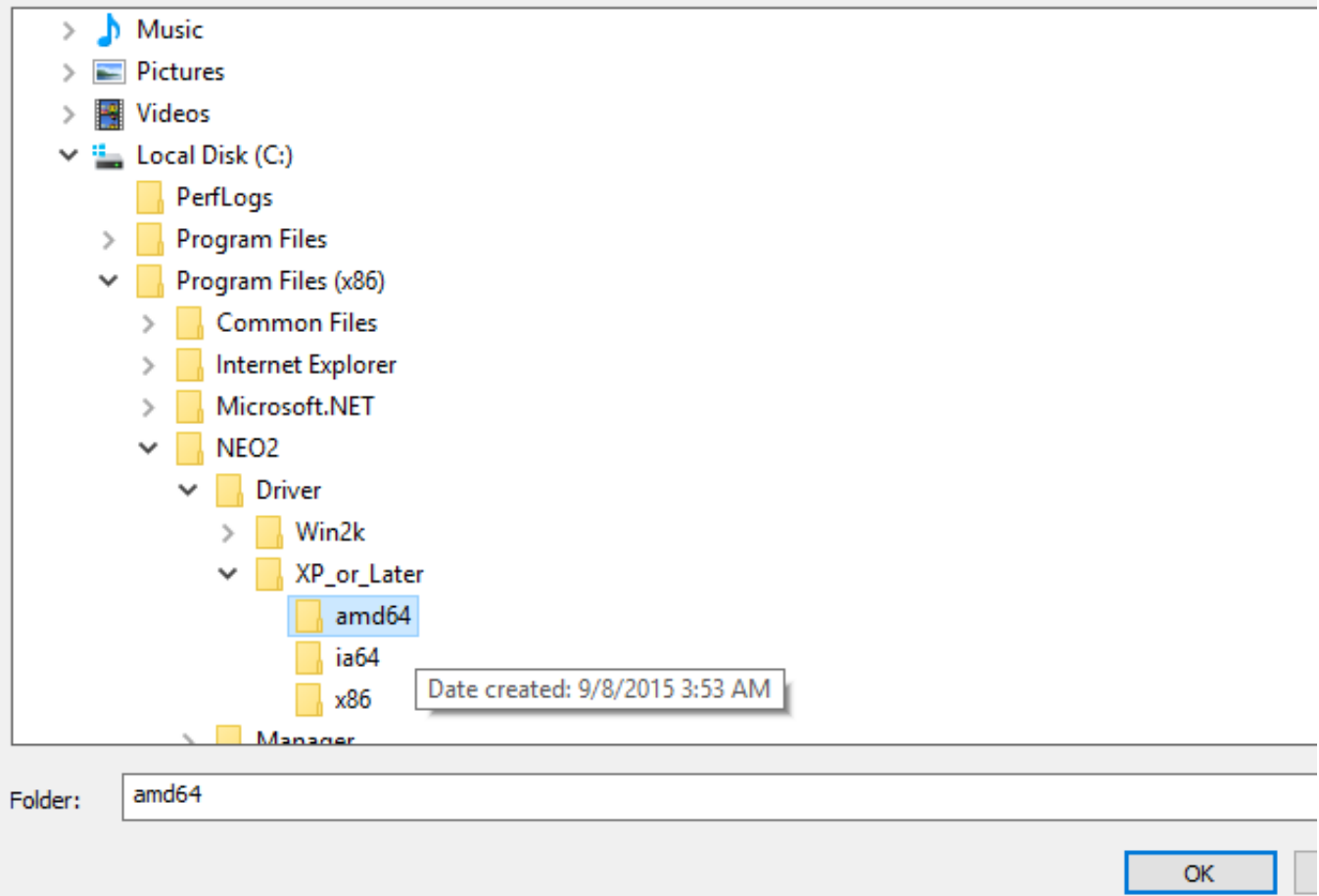


[16] Click "Browse"

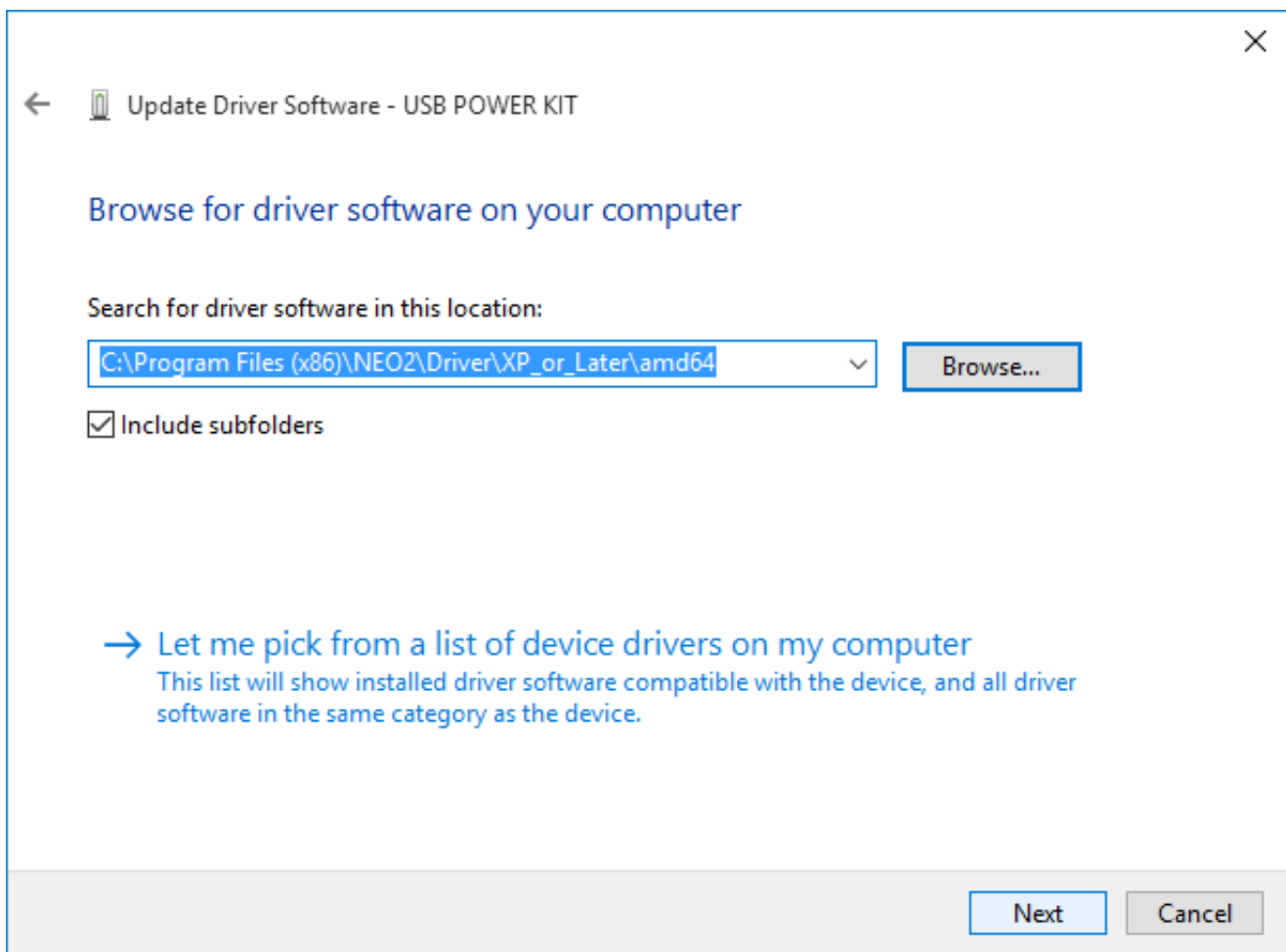


[17] Goto "amd64" folder

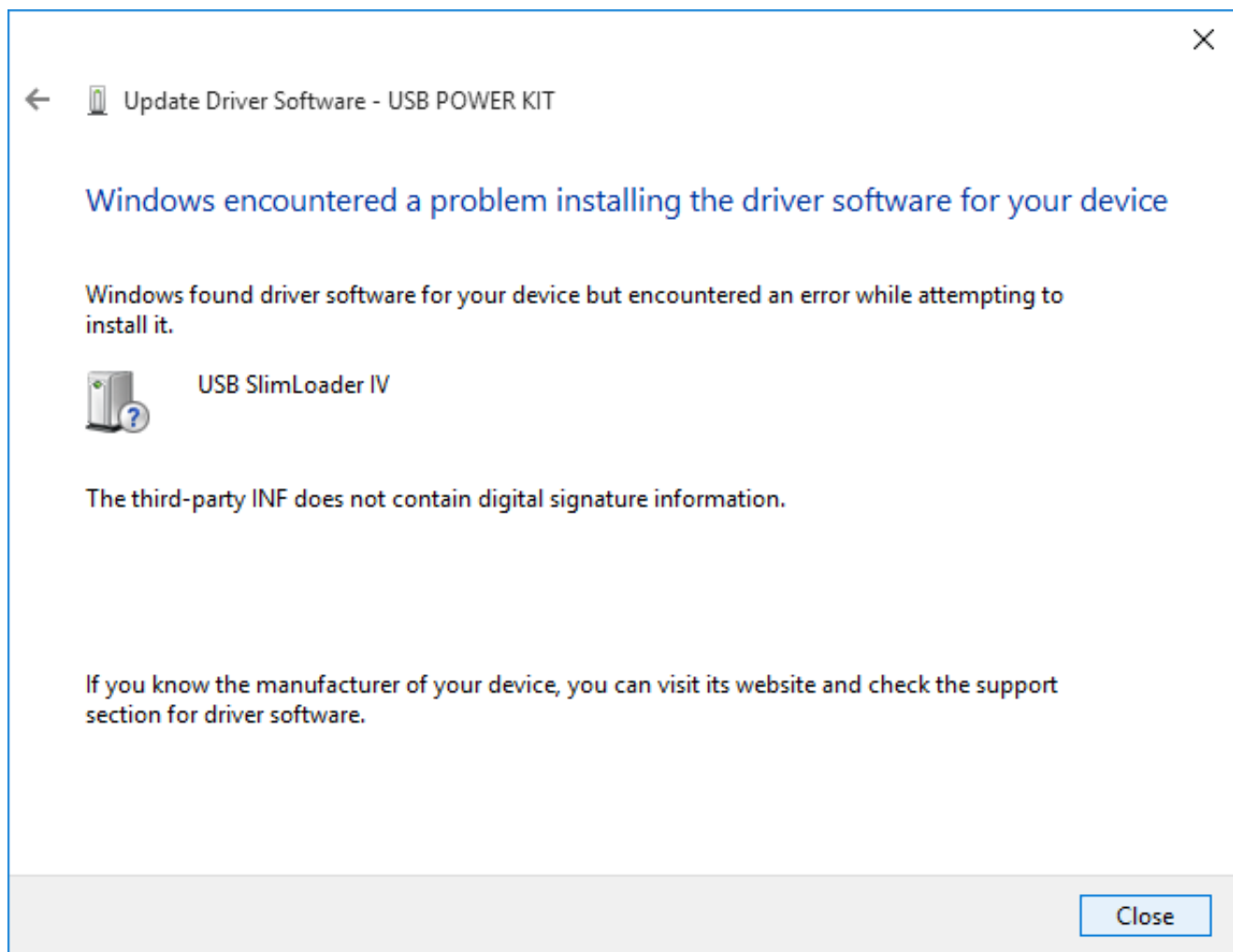
Select the folder that contains drivers for your hardware.



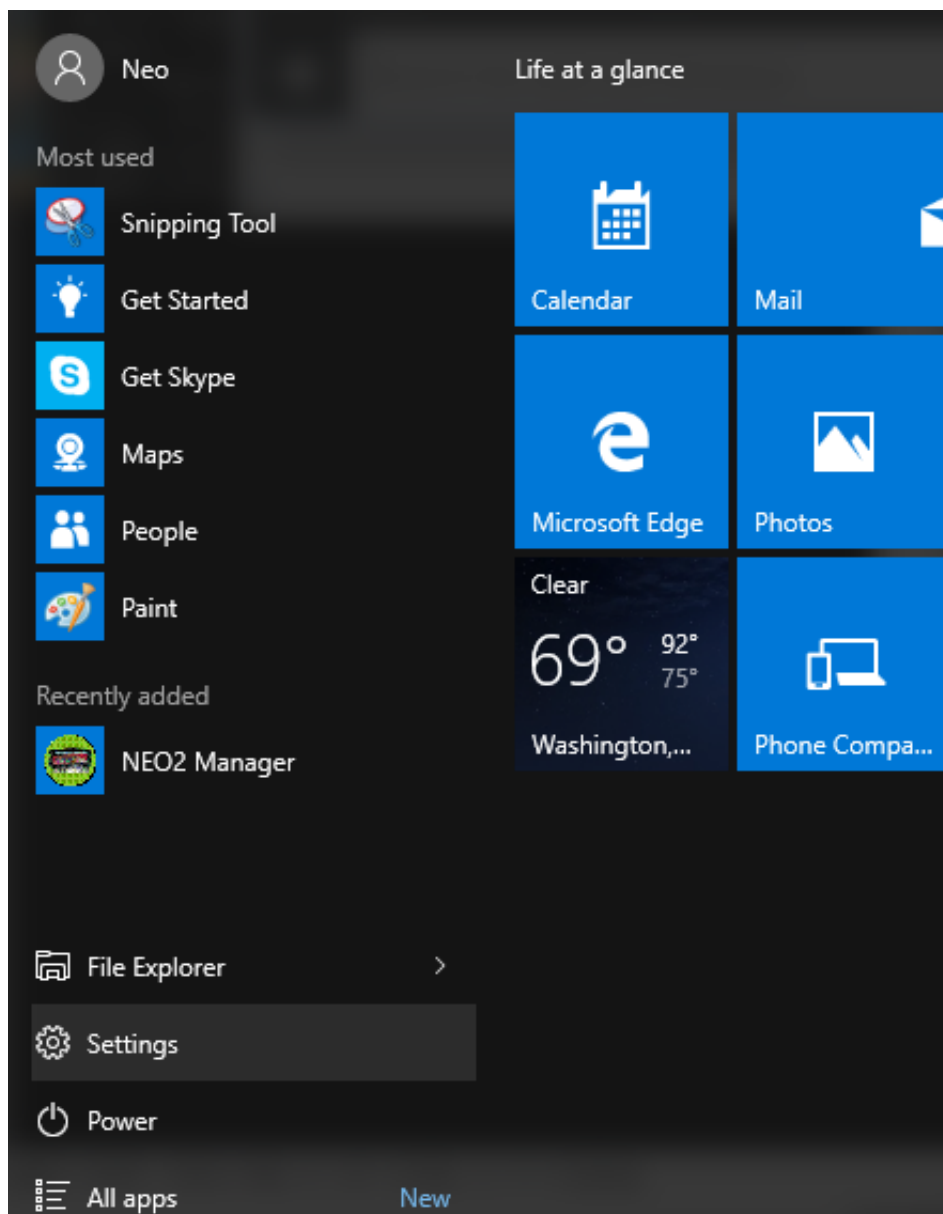
[18] Click "Next"



[19] You will see this digital signature warning message, we have to disable it to make the driver installing workable.



[20] Click STAR icon and select "Settings" again.



[21] Click "Update & security"



Devices
Bluetooth, printers,
mouse



Network & Internet
Wi-Fi, airplane mode,
VPN



Personalization
Background, lock
screen, colors



Ease of Access
Narrator, magnifier,
high contrast

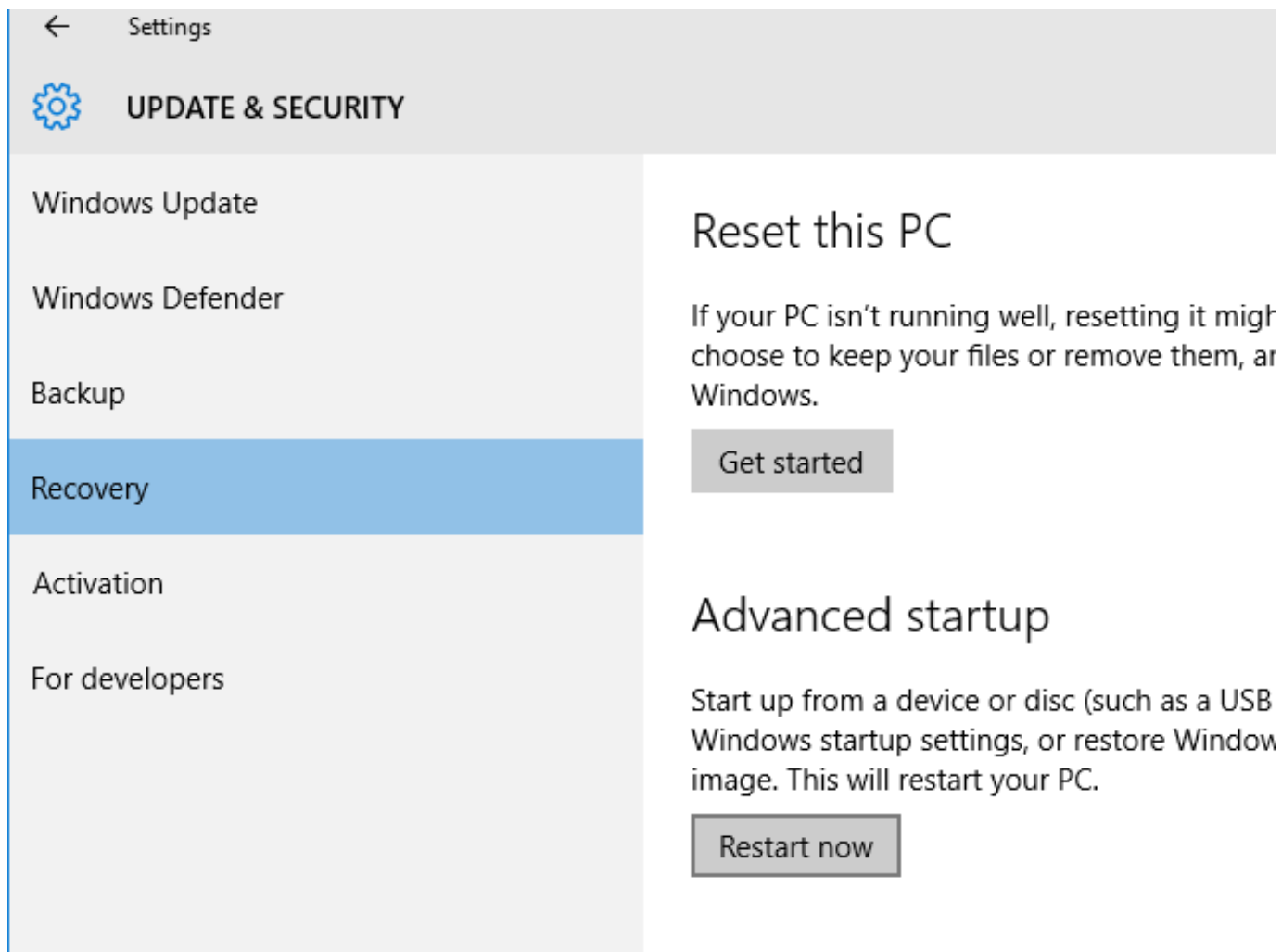


Privacy
Location, camera



Update & security
Windows Update,
recovery, backup

[22] Click "Restart now"



[23] Click "Troubleshoot"

Choose an option



Continue

Exit and continue to Windows 8



Troubleshoot

Refresh or reset your PC, or use advanced tools



Turn off your PC

[24] Click "Advanced options"



Troubleshoot



Refresh your PC

If your PC isn't running well, you can refresh it without losing your files



Reset your PC

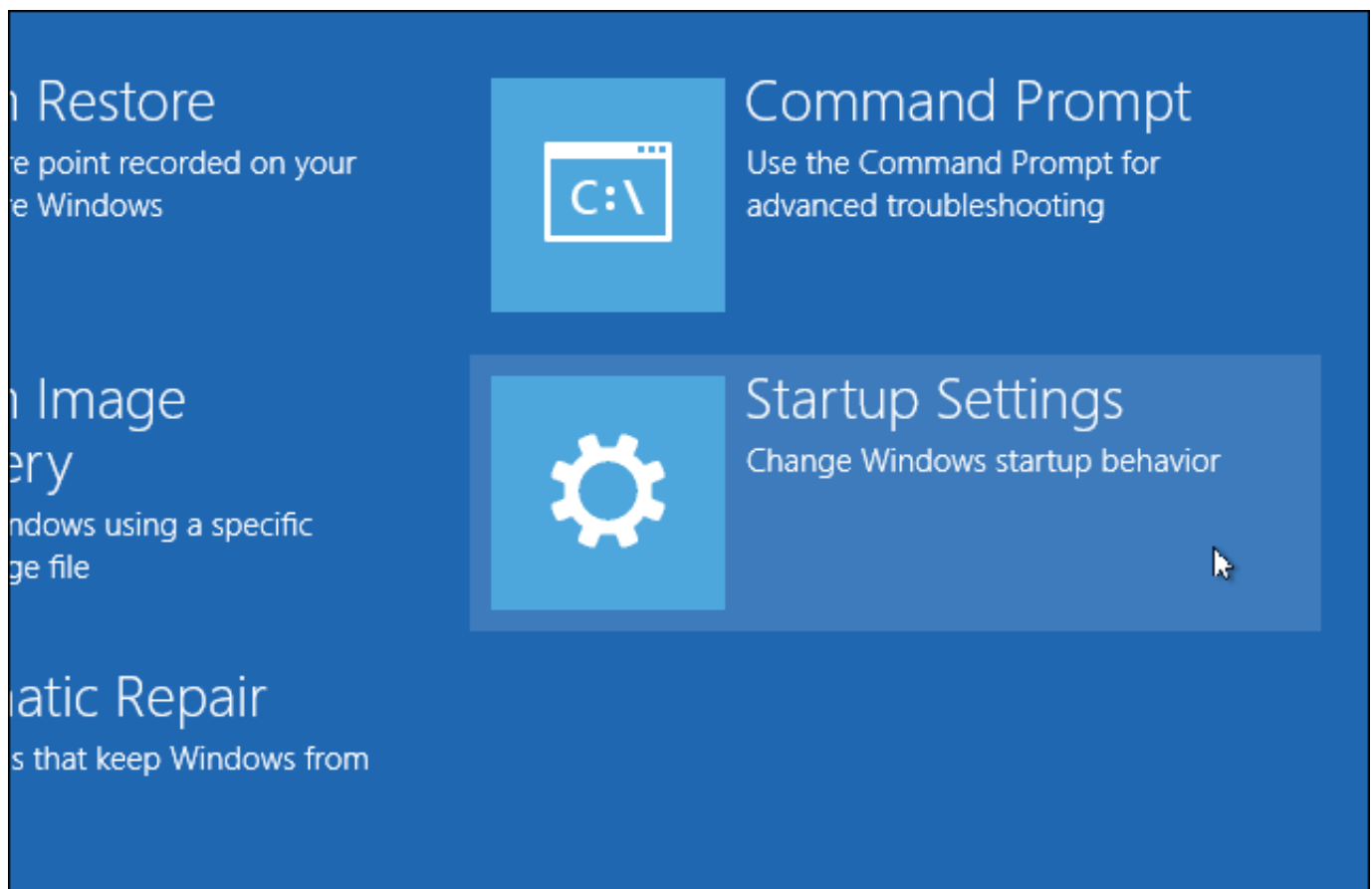
If you want to remove all of your files, you can reset your PC completely



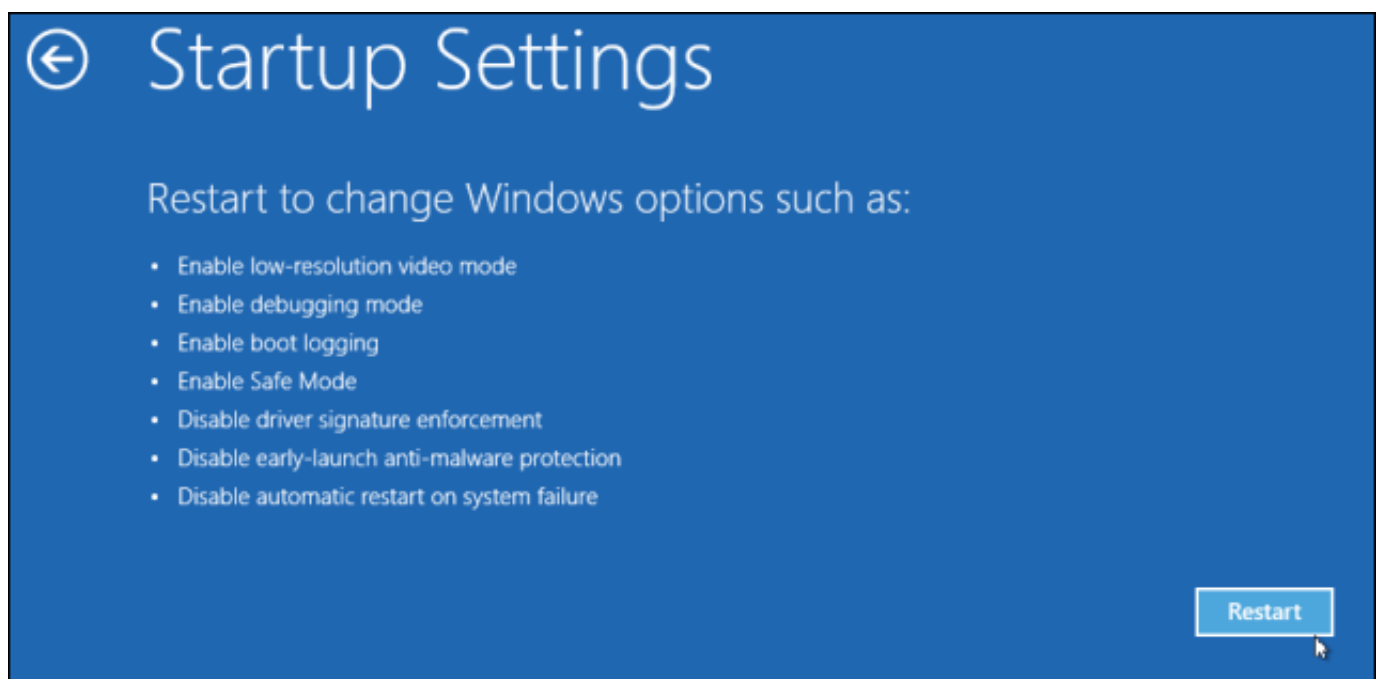
Advanced options



[25] Click "Startup Settings"



[26] Click "Restart"



[27] Press "F7" or "7" to start win10 again.

Startup Settings

Press a number to choose from the options below:

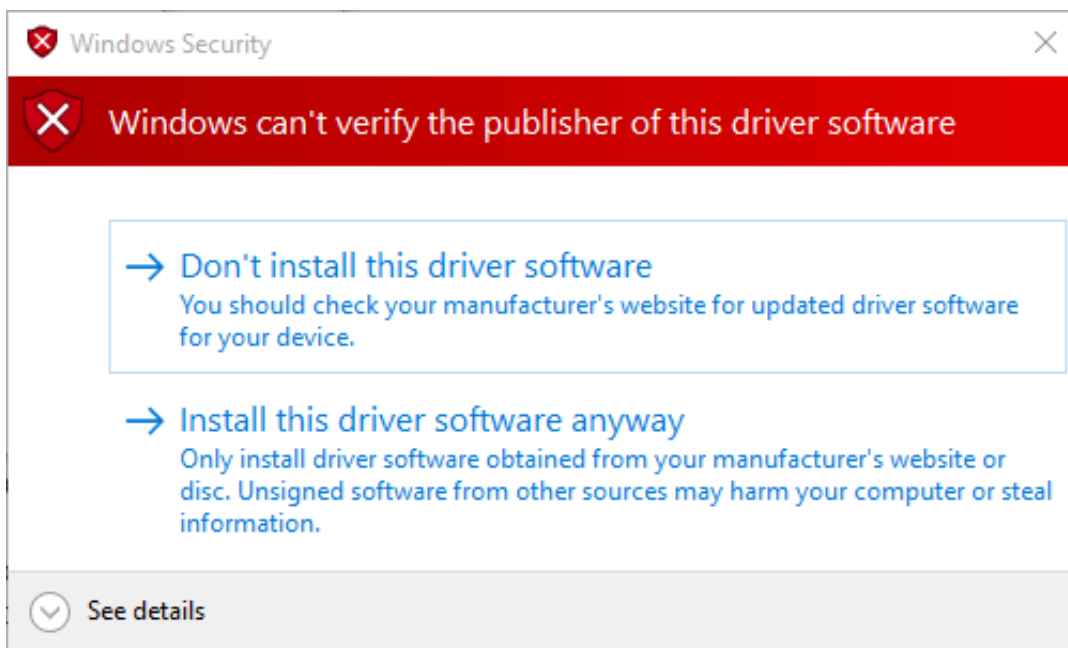
Use number keys or functions keys F1-F9.

- 1) Enable debugging
- 2) Enable boot logging
- 3) Enable low-resolution video
- 4) Enable Safe Mode
- 5) Enable Safe Mode with Networking
- 6) Enable Safe Mode with Command Prompt
- 7) Disable driver signature enforcement
- 8) Disable early launch anti-malware protection
- 9) Disable automatic restart after failure

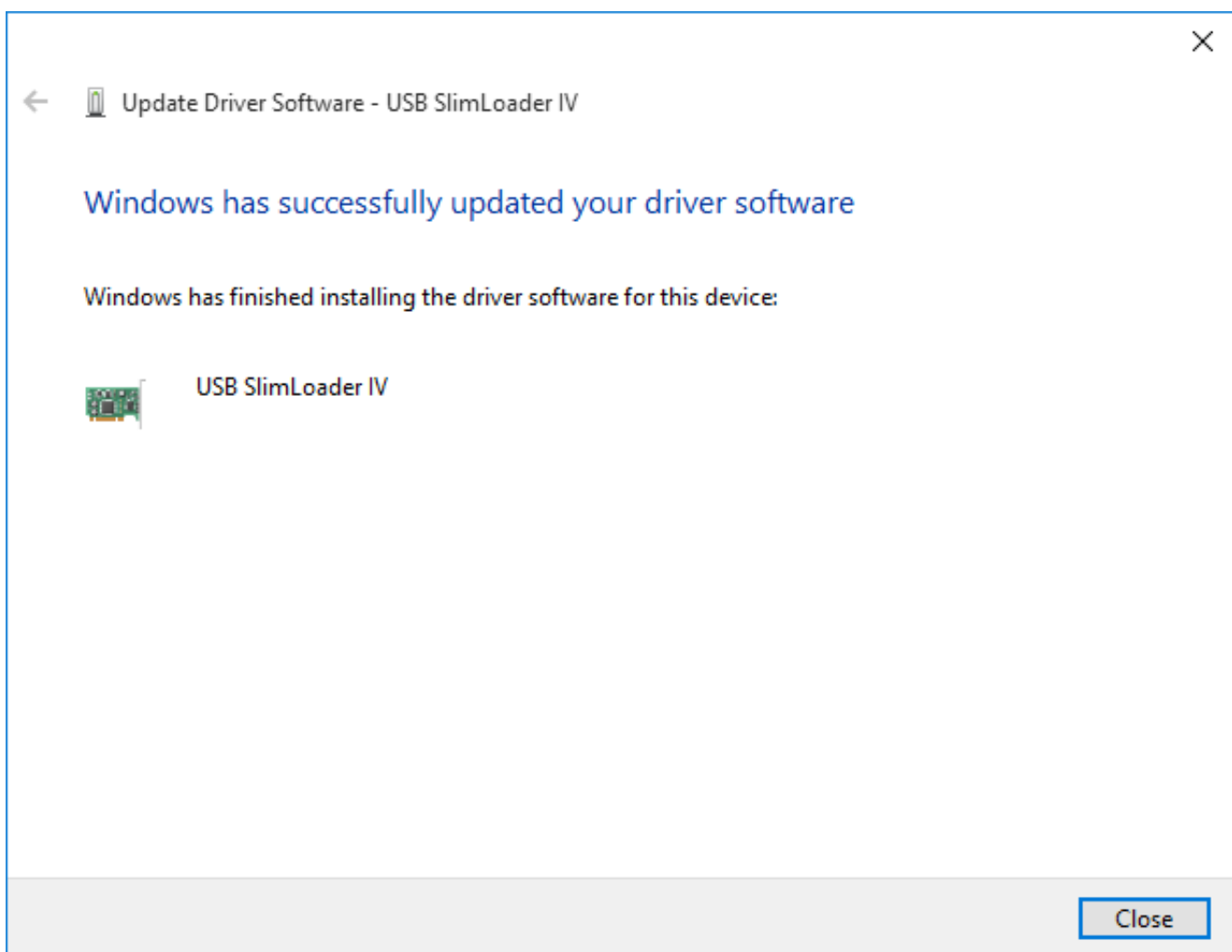
Press F10 for more options

Press Enter to return to your operating system

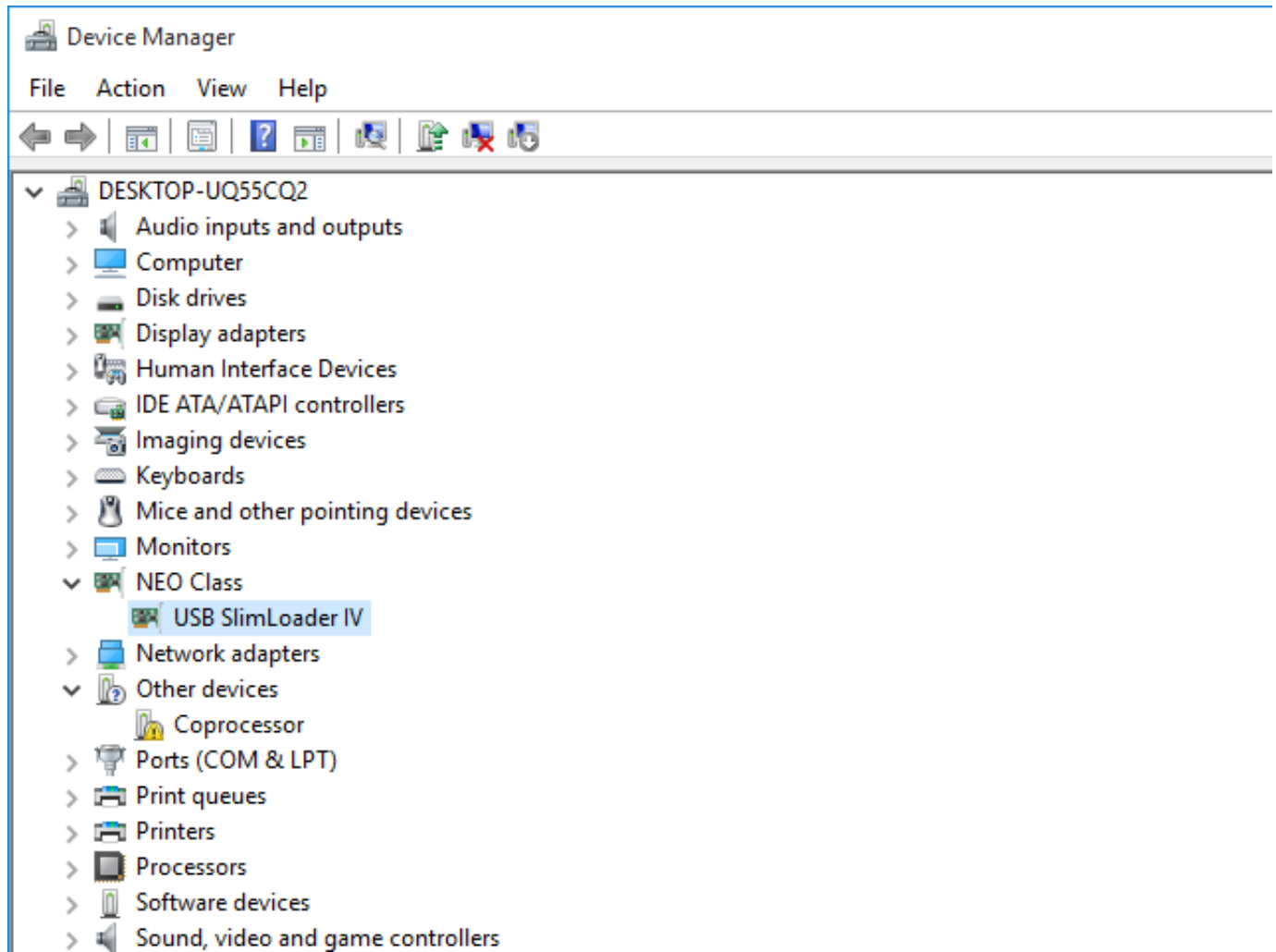
[28] Then, repeat the installation step [10] to [18] again, you will see this warning message, click "Install this driver software anyway"



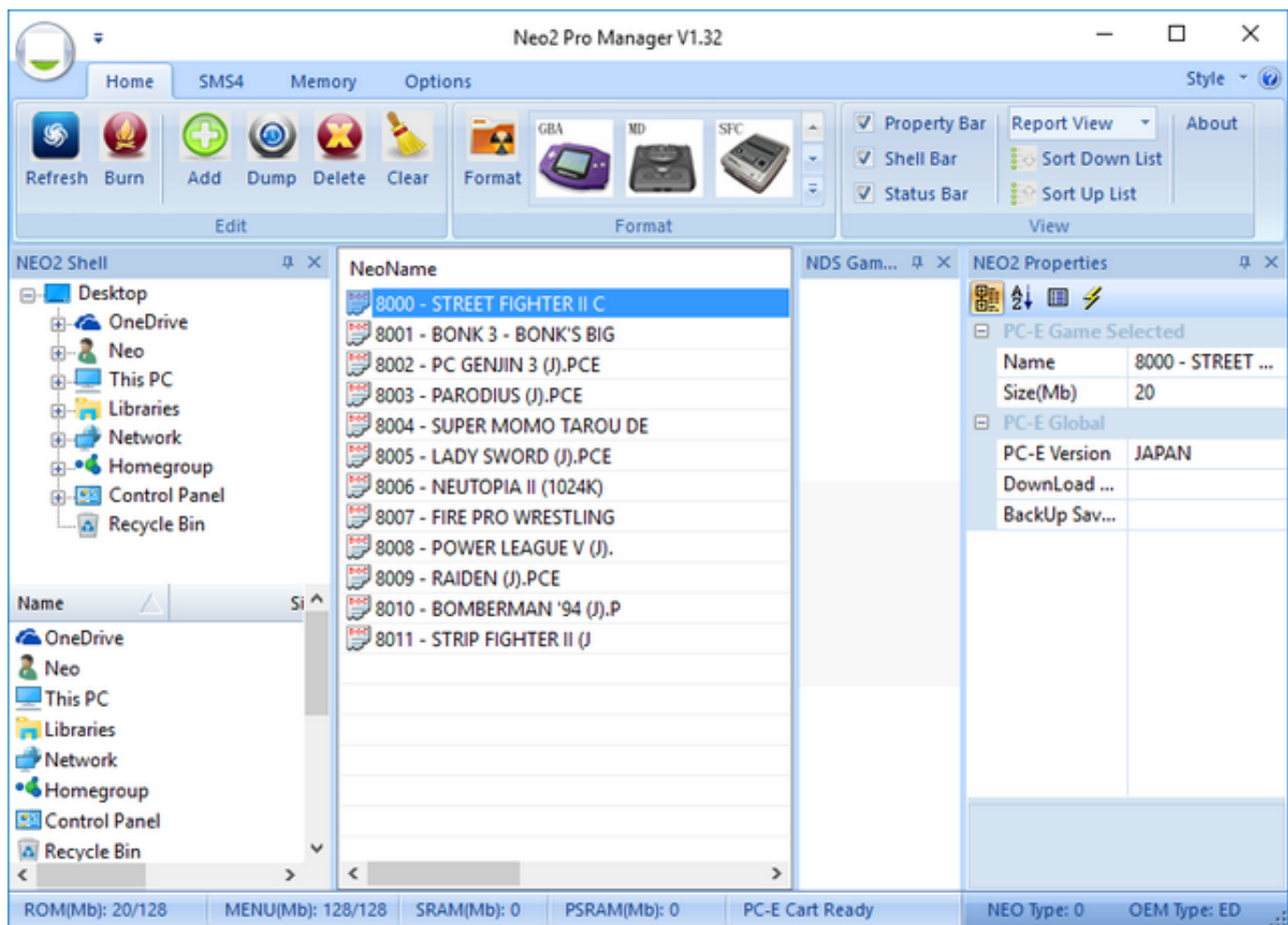
[29] bingo!



Now you can see the SlimLoader IV have been install succeed!



enjoy it :D



Power by www.neoflash.com